

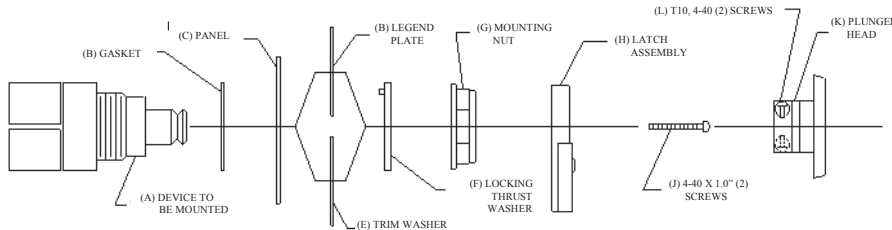
40102's Mushroom Plunger Operator - INSTALLATION INSTRUCTIONS

The operator, as received from the factory, MUST be partially Disassembled before it can be mounted.

Observe all SAFETY REQUIREMENTS and PROCEDURES, N.E.C. and local wiring codes MUST be followed at all times.

1. Remove the Plunger Head. Loosen (T-10, 4-40) screws and remove the Latch Assembly.
2. Remove the Mounting Nut & Insert the Operator through the Panel (NISD requires UL/NEMA 12,13 or better) for mounting.
3. Place a Legend Plate OR a Trim Washer over the Housing.
4. Place a Locking Thrust Washer on the Housing. Engage tab in Housing slot and notches of Legend Plate and Panel.
5. Thread Mounting Nut onto Housing. Tighten Nut to **15 ft.-lbs.** torque to secure to Panel.
6. Attach the Latch Assembly to the front of the Housing tightening screws to 14 in.-lbs. torque.
7. Place Plunger Head on switch actuator, ensure it is fully inserted onto shaft. Tighten (2) screws to 14 in.-lbs. torque.
8. Connect as required with 14 AWG, stranded copper wire only. Torque terminal screws to 18 in.-lbs. (20.7 cm-kg).
9. Test switch for safe operation.

NISD (E357870) - Emergency Stop Push Buttons: 40102-102, -112, -122, -202, -212, and -312; Push Button Operators: 40102-222 and -502 when fitted with; 50702, 50703, 50716 (shall not have any contact blocks stacked on top of it), 51703, or 52702.



WARNING - Normally Open (NO) contacts must not be used for emergency stop control circuits. Never stack blocks more than three tiers high. These devices are rated NISD only when at least one Normally Closed (NC) contact block is securely attached and Plunger Head is Red.

Warning—Danger

These products should only be used where point-of operation guarding devices have been properly installed and maintained so that all appropriate OSHA and ANSI regulations and standards are met. Misapplication of these products on machinery lacking effective point-of-operation safeguards can cause serious injury to the operator of that machinery.

REES, Inc. Fremont, IN 46737 260-495-9811 FAX 260-495-2186 www.reesinc.com